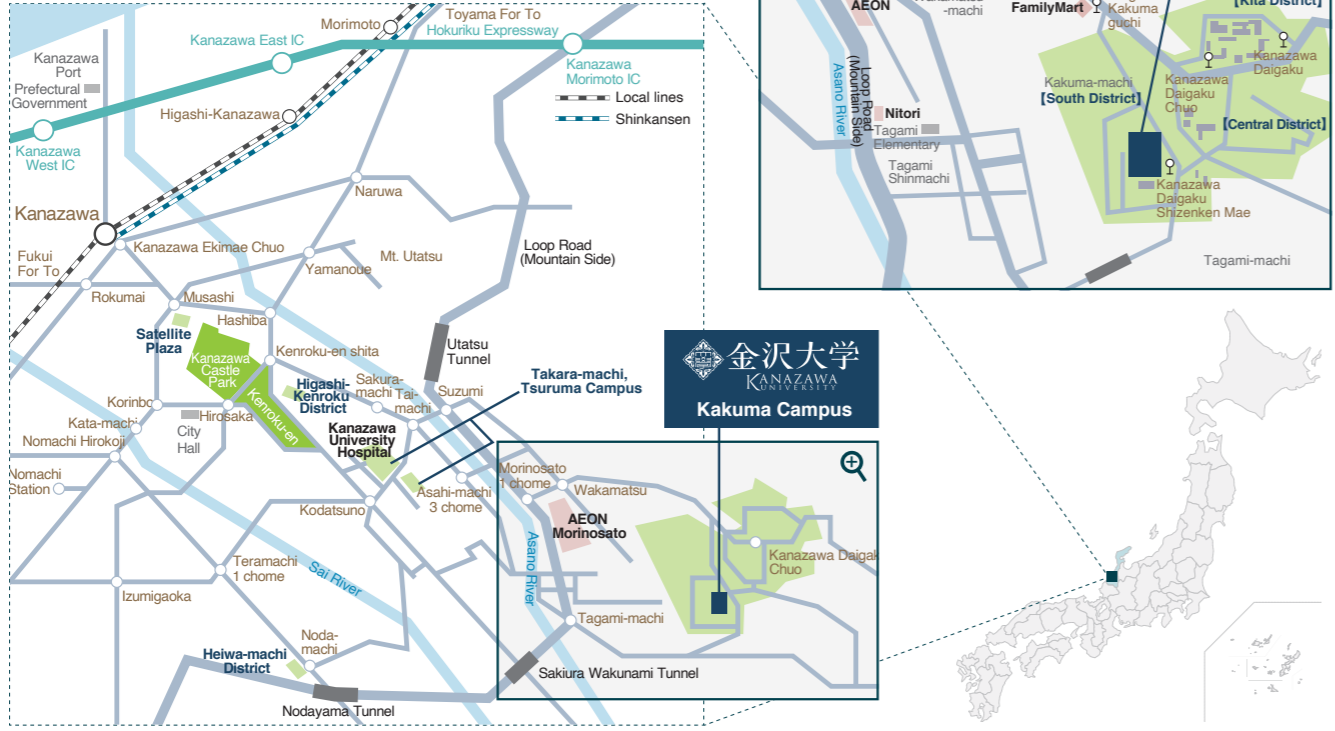


Access from Kanazawa Station (Kenroku-en Exit / East Exit) to Kakuma Campus, Kanazawa University

[By Hokuriku Railroad Bus] Local lines [93][94][97] for "Kanazawa University (via Kenroku-en)," get off at "Kanazawa Daigaku Shizenken Mae (Natural Science & Technology Hall at Kanazawa U)" Takes about 35 minutes from JR Kanazawa Station



Access to Kanazawa City

*Please check the actual timetable on each public transportation website.

From Tokyo / Nagano Area			
By Air	[Haneda] - [Komatsu]	10 flights / Day	1 hour
JR	[Tokyo] - [Kanazawa]	"Kagayaki" Hokuriku Shinkansen	2 hours and 28 minutes
JR	[Nagano] - [Kanazawa]	"Kagayaki" Hokuriku Shinkansen	1 hour and 6 minutes
Express Bus	[Shinjuku Station] - [Kanazawa]	4 - 8 buses / day	7 hours and 25-55 minutes
Express Bus	[Tokyo Station] - [Kanazawa]	1 bus / day	8 hours and 30 minutes
* Komatsu Airport - Kanazawa Station: 40 minutes by Express Bus			
* Toyama - Kanazawa 18 minutes			
From Osaka / Kyoto area			
JR	[Kyoto] - [Kanazawa]	(Special Express "Thunderbird")	2 hours and 313 minutes
JR	[Osaka] - [Kanazawa]	(Special Express "Thunderbird")	2 hours and 30 minutes
Express Bus	[Kyoto] - [Kanazawa]	6 buses / day	4 hours
Express Bus	[Osaka] - [Kanazawa]	6 buses / day	4 hours and 50 minutes
* Fukui - Kanazawa 43 minutes			
The extension between Kanazawa - Tsuruga on Hokuriku Shinkansen is scheduled to open at the end of FY 2023.			
From Nagoya area			
JR	[Nagoya] - [Kanazawa]	(Special Express "Shirasagi")	3 hours
Express Bus	[Nagoya] - [Kanazawa]	12 buses / day	4 hours
* Shinkansen Transfer 2 hours and 30 minutes			
From other areas			
By Air	[Sapporo / Fukuoka / Naha] - [Komatsu]		



Student Affairs Division,
Transdisciplinary Sciences Administration Department
Kakuma-machi, Kanazawa, Ishikawa 920-1192
E-mail: new-gakuiki@adm.kanazawa-u.ac.jp
Tel: 076-264-5910 Fax: 076-264-5899



KU Admission Information App

Download Now

App Store からダウンロード

Google Play で手に入れよう

入試情報

GREEN PRINTING JPPF
P-B10234
R3 Ver.3
2022.03

Kanazawa University

College of Transdisciplinary Sciences for Innovation

R3 Ver.3

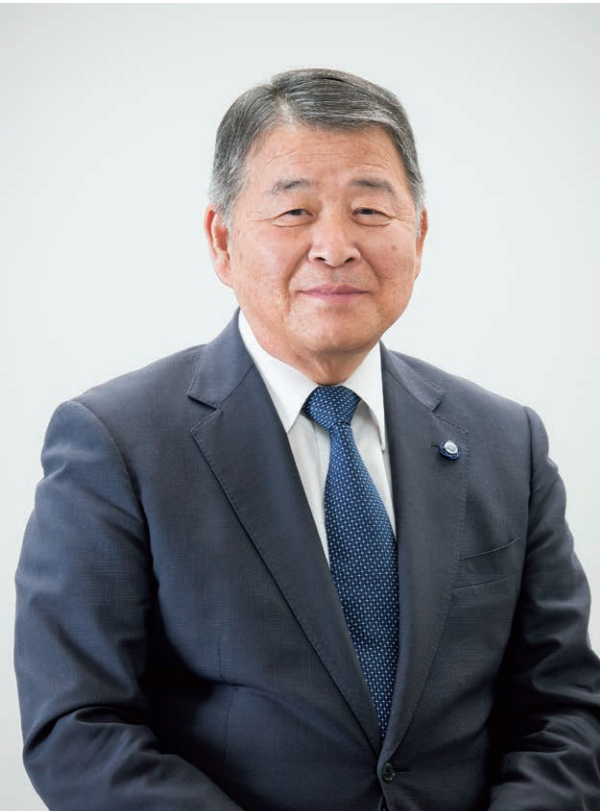
Leading innovations with transdisciplinary knowledge

President of Kanazawa University
YAMAZAKI, Koetsu

Change yourself! Change the future!

Opportunities to encounter new knowledge and challenges are waiting for you. Learn to have multifaceted perspectives, turn your deep knowledge into your wings, and fly to the sky. There is no border in the sky. You are in control of your limit and potential. Don't just imagine the future, start creating one from here.

School of Entrepreneurial and Innovation Studies: Established 2021.
School of Tourism Sciences and Design: Established 2022.



President of Kanazawa University
YAMAZAKI, Koetsu

Challenging the knowledge-intensive society

We are shifting from an “industrial-centered society,” where mass production and standardized products consumption support its growth, to a “knowledge-intensive society,” where its growth is supported by the creation of new value, high-value-added products and services based on advanced information and knowledge. Furthermore, the COVID-19 pandemic accelerated the development and spread of ICT technologies such as IoT, which connects all things via the Internet, big data obtained from IoT, and artificial intelligence (AI), and technological innovation is surging at an unprecedented pace in every aspect of the society.

Now, when the global environment is undergoing major change, Kanazawa University is committed to “Pioneering the era of the 21st Century and contributing to world peace and the sustainable development of humankind” as stated in the charter. As a concrete action to achieve this, it established a new transdisciplinary field of study, “College of Transdisciplinary Sciences for Innovation” in April 2021, and opened the “School of Entrepreneurial and Innovation Studies” as its first school. Another new school, “School of Tourism Sciences and Design,” will be established in April 2022.

With the increasing number of complex social issues along with globalization, the role of a university becomes not only to provide advanced and specialized knowledge but also a learning environment that fosters the ability to see the essence of social issues and the willingness and ability to solve problem through collaboration with people with diverse backgrounds. For our country to overcome its challenges, namely, restore its international competitiveness and revitalize regional economies, it is essential to have talented human resources who will pioneer for the future and transform the world with their creativity and breakthroughs.

College of Transdisciplinary Sciences for Innovation aims to identify and solve problems in the present and future, cultivating core leaders who will lead innovation through “transdisciplinary learning and collaboration” and “fostering entrepreneurship.” The School of Entrepreneurial and Innovation Studies aims to produce human resources who think outside of the box, transform society, and create a new future. The School of Tourism Sciences and Design aims to cultivate human resources who create a new “value design society” that is different from the conventional tourism. As “a research university dedicated to education, while opening up its doors to both local and global society,” our mission will be fulfilled by sending human resources that would bring a breath of fresh air to the local communities and the world.

What do you want to learn for what purpose?

School of Entrepreneurial and Innovation Studies, in the College of Transdisciplinary Sciences for Innovation was established in April 2021, and now have its first batch of students. Some people may associate the name College of Transdisciplinary Sciences for Innovation with a broad range of liberal arts and science subjects. At our university, we learn a wide range of knowledge and technology in various fields such as humanities, social sciences and natural sciences. However, what really matters is not acquiring knowledge, but what are you going to learn to serve a specific purpose.

It is becoming increasingly necessary to have the ability to identify and respond to the challenges that will arise in society in the future. On the other hand, in order to deal with future challenges that are becoming more complex and diverse, conventional education is not enough. It is necessary to create new value by combining existing academic fields and/or achievements. Therefore, the students learn what is necessary to solve their issues, whether it be humanities or science, through a so-called “back-casting learning,” and they will work on solving problems by fusing different fields.

This school aims to cultivate human resources who lead social transformation and innovation in various fields with a pioneering spirit. We have established a curriculum to achieve these objectives. There are also mandatory subjects such as entrepreneur related subjects, practical exercises and international internships (or study abroad). Through these courses, by providing opportunities to encounter diverse people and values, we will nurture the ability to actively communicate in the international community, and the ability to independently take on challenges.

The first class of the School of Entrepreneurial and Innovation Studies attracted many enthusiastic students from all over Japan. We are confident that in four years we will be able to send human resources to the world who will lead social change through mutual stimulation and friendly competition. To this end, the teachers will support the students closely. If you want to change society and try new things, why not change yourself and the future in the College of Transdisciplinary Sciences for Innovation? Let's create a new society and future from transdisciplinary learning.



Head of School of Entrepreneurial and Innovation Studies,
Chair of Faculty of Transdisciplinary Sciences for Innovation
OJIMA, Kyoko

Transdisciplinary Studies for Future Innovation

College of Transdisciplinary Sciences for Innovation was established in April, 2021 as the fourth college of Kanazawa University. Even though it is the 4th college, it is mentioned first in our school regulations, which shows President's strong enthusiasm and the University's high expectations toward this college.

The purpose of this college is to create new innovations, beyond the borders of conventional academic fields, transforming the current stagnant Japanese society. At the same time, it aims to foster innovative human resources capable of demonstrating core leadership in the knowledge-based society, who hope to contribute to the region and the world by acquiring specialized knowledge in transdisciplinary fields, and promote a model for finding and solving challenges.

The keywords to this college are: transdisciplinary; innovation; entrepreneur; design thinking; and diversity.

Recently, some national universities have established new departments aiming to provide interdisciplinary education. Certainly, there is a criticism that interdisciplinary education is a “theory on paper” and that it is just a collection of researchers from various fields. This criticism, however, does not come from “design thinking,” which is based on flexible thinking or creative mindset. We have carefully selected a wide variety of teachers from inside and outside the university who are willing to take on challenges in different fields, and gathered promising people to create a faculty organization. We have started entrepreneurship program as a means of innovation.

There was a time when the phrase “Japan as Number One” was commonly used. However, Japan's international status has declined significantly in the last 20 years, and it has been pointed out that in a world the COVID-19 pandemic, the Japanese economy has become increasingly impoverished, and Japan slipped down the rankings of advanced countries. This is because innovation has stagnated since the late 1990s, and we have been unable to produce superior products and services. We make efforts to develop education and research for a breakthrough.



Dean of College of Transdisciplinary Sciences for Innovation,
Dean of Institute of Transdisciplinary Sciences for Innovation
OHTAKE, Shigeki

Undergraduate programs

College of Transdisciplinary Sciences for Innovation

An expanding new transdisciplinary field of study.
School of Entrepreneurial and Innovation Studies

[Established 2021]

School of Tourism Sciences and Design

[Established 2022]

Fostering human resources who will lead innovation by learning various fields and systems in an transdisciplinary and integrated manner

- The symbol color for the college is “Chigusa-iro,” or light greenish-blue.
- “Chigusa” stands for “various kinds” and “diversity.”
- This color was used as the base color of the layered dyeing technique, namely the color of “foundation”.

College of Human and Social Sciences

School of Humanities School of Law
School of Economics School of Teacher Education
School of Regional Development Studies School of International Studies

College of Science and Engineering

School of Mathematics and Physics School of Chemistry
School of Mechanical Engineering School of Frontier Engineering
School of Electrical, Information and Communication Engineering
School of Geosciences and Civil Engineering School of Biological Science and Technology

College of Medical, Pharmaceutical and Health Sciences

School of Medicine [six-year program] School of Pharmacy [six-year program]
School of Medical and Pharmaceutical Sciences School of Health Sciences / 5 Departments

4 colleges, 19 schools

INDEX

Greetings	1	School of Tourism Sciences and Design	
About College of Transdisciplinary Sciences for Innovation	3	About School of Tourism Sciences and Design	15
Entrance Exam Info (Common to College of Transdisciplinary Sciences for Innovation)	5	3 Features	16
		Curriculum Map	17
		Curriculum	18
School of Entrepreneurial and Innovation Studies		Full-time Teachers for the College of Transdisciplinary Sciences for Innovation (teachers-to-be included)	19
About School of Entrepreneurial and Innovation Studies	7	Student Advisory System	23
3 Features	8	Kanazawa Guide	24
Curriculum Map	9	Kanazawa University Campus Introduction	25
Curriculum	10	ACCESS	26
Students Interview	11		
Entrance Exam Results	13		

Basic Policy for the 2022 Admission Screening

[Upper Limit of the Number of Students to Be Admitted] School of Entrepreneurial and Innovation Studies: 55
School of Tourism Sciences and Design: 15

1. General Admission

First Schedule / Liberal Arts-oriented Selection, Science-oriented Selection

Number of Students to Be Admitted

School of Entrepreneurial and Innovation Studies
School of Tourism Sciences and Design

Liberal Arts-oriented Selection: 20
Liberal Arts-oriented Selection: 8

Science-oriented Selection: 20
Science-oriented Selection: 5

We evaluate academic skills in a multidimensional way. In Liberal Arts-oriented, Math, or Examination of Integrated Subjects (Liberal Arts) are given, as well as assessing basic academic ability, Japanese Language and English skills. In Science-oriented, English tests are given, as well as assessing basic academic ability, Math and Science skills. Also, upon application, applicants can set the other school within the College of Transdisciplinary Sciences for Innovation as their "second choice." Successful applicants are announced by each school.

First Schedule / Liberal Arts Education Division and Science Education Division

Number of Students to Be Admitted

School of Entrepreneurial and Innovation Studies: 3 for liberal arts, 3 for science
School of Tourism Sciences and Design: 1 for liberal arts, 1 for science

Liberal Arts Education Division [IKKATSU] Exam evaluates basic academic skills, English skills, comprehension, ability to think logically, ability to express themselves. Science Education Division [IKKATSU] Exam evaluates basic math & English skills and physics or chemistry skills. Those admitted through [IKKATSU] Admission will belong to the School of General Education, in the Institute of Liberal Arts and Science for the first year, then will be transferred based on the student's preference, academic achievements, etc.

2. Special Admission

KUGS Admission / Comprehensive Selection II

Number of Students to Be Admitted

School of Entrepreneurial and Innovation Studies: 6 School of Tourism Sciences and Design: A few

In addition to basic academic skills, basic knowledge, reasoning and writing skills are evaluated through essay tests. Communication skills, commitment, and enthusiasm before and after enrollment will be evaluated through interview tests (including presentations) in a multifaceted and comprehensive manner.

KUGS Admission / Comprehensive Selection based on English language Skills II

Number of Students to Be Admitted

School of Entrepreneurial and Innovation Studies: A few School of Tourism Sciences and Design: A few

In addition to basic academic skills, reasoning and communication skills, as well as commitment and enthusiasm before and after enrollment will be evaluated through interview tests (including presentations) in a multifaceted and comprehensive manner.

Special Talent Admission (CHOZEN Selection) / Admission by A-lympiad Award

Number of Students to Be Admitted

School of Entrepreneurial and Innovation Studies: A few School of Tourism Sciences and Design: A few

In the interview tests (including presentations), students are asked multifaceted questions to comprehensively evaluate their motivation to tackle social issues using their unique mathematical talents.

Special Talent Admission (CHOZEN Selection) / Admission by CHOZEN Literature Award

Number of Students to Be Admitted

School of Entrepreneurial and Innovation Studies: A few School of Tourism Sciences and Design: A few

In the interview tests (including presentations), students are asked multifaceted questions to comprehensively evaluate their motivation to tackle social issues using their unique literary talents.

S.A. by Recommendation for Students Living Overseas

Number of Students to Be Admitted

School of Entrepreneurial and Innovation Studies: 3 School of Tourism Sciences and Design: A few

In the interview tests (including presentations), students are asked a variety of questions to comprehensively evaluate their motivation to study and their aptitude for the school after enrollment.

S.A. for Adult and Non-traditional students

Number of Students to Be Admitted

School of Entrepreneurial and Innovation Studies: A few School of Tourism Sciences and Design: A few

Basic knowledge, reasoning, writing skills, etc. will be evaluated via essay test. In the interview tests (including presentations), students will be asked multifaceted questions to assess their motivation to study and the aptitude for the school in a multifaceted and comprehensive manner, including their commitment in life and their essays submitted.

S.A. for Returnees

Number of Students to Be Admitted

School of Entrepreneurial and Innovation Studies: A few School of Tourism Sciences and Design: A few

Two subject areas among Japanese Language, Mathematics, and English will be tested. Comprehension, motivation to study, and basic knowledge, as well as basic academic skills will be evaluated in a multidimensional and comprehensive manner through interview tests (including presentations).

S.A. for International Baccalaureate

Number of Students to Be Admitted

School of Entrepreneurial and Innovation Studies: A few School of Tourism Sciences and Design: A few

Not just meeting the criteria described as eligible for International Baccalaureate, other skills and aptitude will be assessed in multidimensional and comprehensive manner as follows: basic knowledge, reasoning and writing skills will be evaluated in the essay test; Comprehension, motivation to study will be evaluated in the interview test (including presentations).

S.A. for Self-funded International Students

Number of Students to Be Admitted

School of Entrepreneurial and Innovation Studies: A few School of Tourism Sciences and Design: A few

In addition to emphasizing basic academic skills, students are evaluated through interview tests (including presentations) in a multifaceted and comprehensive manner to assess their communication abilities, motivation to study, and abilities and qualities necessary for learning at the university.

- [Notes]
- 1 Please make sure to check the latest information on our website and the Application Guidelines before applying.
 - 2 In the Special Admission, "I" refers to the entrance examination which does not require the Common Test for University Admissions, and "II" refers to the entrance examination which requires the Common Test for University Admissions.
 - 3 Of the initial 55 enrollment quota planned for the School of Tourism Sciences and Design, 40 were waiting for approval from the government, however, as this request was not approved, we have decided to reduce the enrollment capacity to 15 students, as described above. We are still planning to change (increase) the enrollment quota for the selection of new students in 2023 and on.

School of Entrepreneurial and Innovation Studies

Innovation in Society × Business

Established April, 2021

Leading innovation and social transformation

Established April, 2021

College of Transdisciplinary Sciences for Innovation

School of Entrepreneurial and Innovation Studies

In the coming society, which is about to change a great deal, it is essential to have human resources who possess a wide range of knowledge beyond the borders of academic fields, and become core leaders leading social transformation. In 2021, we established the School of Entrepreneurial and Innovation Studies in the College of Transdisciplinary Sciences for Innovation, with the aim of developing human resources who will lead social transformation in creating innovation. In Disciplinary [TANREN] courses, students learn new knowledge and co-creation with others in a diverse environment through project exercises. Collaborating with teachers and people outside of the university, and with their free thinking, students learn how to engage with the status quo and future issues in practical ways.

[General Admission]

First schedule (Liberal Arts-oriented Selection and Science-oriented Selection), First schedule (Liberal Arts Education Division and Science Education Division)

[Special Admission]

KUGS Admission (Comprehensive Selection II, Comprehensive Selection based on English language skills II), Special Talent Admission (CHOZEN Selection) (Admission by A-lympiad Award I, Admission by CHOZEN Literature Award), S.A. by Recommendation for students Living Overseas, S.A. for Adult and Non-traditional students, S.A. for Returnees, S.A. for International Baccalaureate, and S.A. for Self-funded International Students

Desirable image of human resource to be nurtured at the "School of Entrepreneurial and Innovation Studies"

The School of Entrepreneurial and Innovation Studies aims to foster human resources who will address the resolution of diverse issues that comes to surface based on an adequate understanding of the radical social change and scientific development on a global scale by utilizing various knowledge of the humanities, social science and natural science fields, and who will be cutting-edge leaders of social change with ambition and education to develop new "knowledge" into society.

[Desired Applicants]

The School of Entrepreneurial and Innovation Studies seeks applicants with the following ambitions.

- People who wish to study a variety of fields and then integrate that knowledge to take the initiative in locating and solving issues.
- People who are intellectually enthusiastic about a variety of systems and customs, and who wish to contribute to building a better society.
- People who wish to joint and integrate the latest knowledge and take on the challenge of new creation that contribute to social reform.



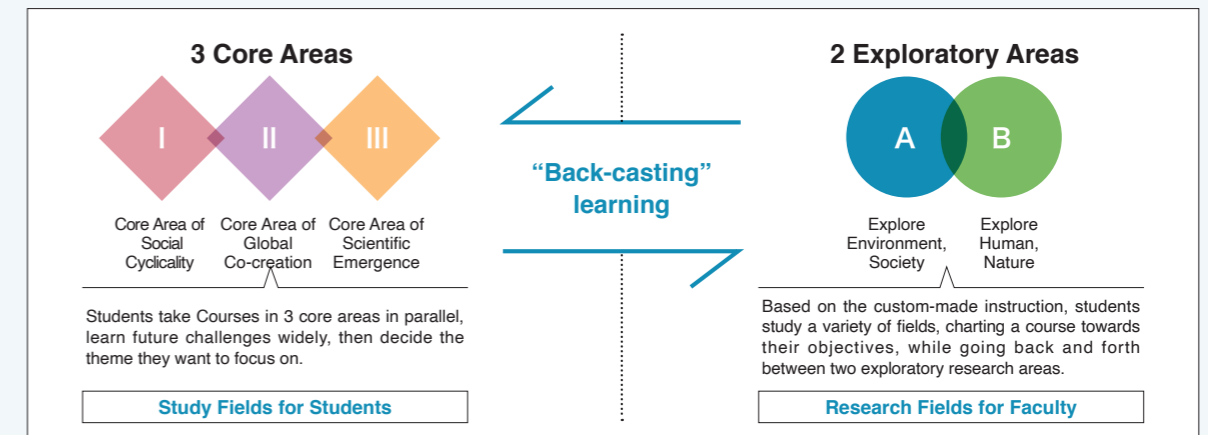
3 Features

1 Learn Flexibly! Acquire specialized knowledge, ranging from basic to practical, in the transdisciplinary fields

- ▶ Students start studying "Core areas & Exploratory areas" in the first year by taking courses among the core Courses.
- ▶ Students learn the latest knowledge and technologie according to their interest ,deeply and widely in the well-balanced transdisciplinary academic fields.

[Core areas & Exploratory areas]

The curriculum systematically allows students to learn cutting-edge contents while also acquiring the fundamentals.



2 Go out into society! Encounter various people and their values to enhance human drive and ability.

- ▶ Through Practical [JISSEN] & Disciplinary [TANREN] Courses, students learn co-creation within society.
- ▶ From the first year on, students are encouraged to study hand-in-hand with the business world and the wider community, as well as learn from society.
- ▶ From the second year onwards, students are required to participate in either entrepreneur internship, study abroad programs, or international internship programs to gain a lot of experience and acquire practical skills in order to head out into society,

[Fostering Entrepreneurship]

In collaboration with the business community, students learn entrepreneurship and practical methods on and off campus.



3 Take the initiative! Engage with future issues and take a step toward social transformation.

- ▶ From the mid-third to the fourth year, students link and integrate their knowledge acquired by solving the problems they have set up, and launch demonstration experiments and social implementation projects through internships.
- ▶ Students learn solutions on a platform originated in business and financial institutions.

[Project Exercise]

Take a deep-dive into your future issues and the solutions, and make them more practical.



Features of School of Entrepreneurial and Innovation Studies

[The 5th Science and Technology Basic Plan
(January 2016)]

STI (science, technology, and innovation) is defined as "Innovation in creating intellectual and cultural value based on new knowledge from scientific discoveries and inventions, and expanding this information to create economic, social and public value"

[Integrated Innovation Strategy (June 2018)]

Establishing an educational system in order to produce human resources who are capable of creating scientific and technological innovation is a fundamental task. It is necessary to build an educational system that combines science and engineering sciences with various fields including humanities and social sciences and we have to consider how we can apply this knowledge from non-science and engineering fields to science and technology innovation.

Based on the recommendations of the government, we will systematically conduct transdisciplinary and entrepreneurship education to work to lead new social transformations.

[Specialized Education Map]

Thorough study guidance by increasing the number of advisors

A customized learning plan is created by monitoring the learning progress and the future vision of each student.

Curriculum emphasizing problem-identifying-and-solving models.

Students take a systematic course of study, from searching for problems and applying solution to society.

Practical education in a diverse environment

Using a variety of entrance examination systems, we create a diverse environment that includes international students and adults

Fundamental [KIBAN] Guidance

GS Courses for Undergraduates
Courses required to learn specialized skills common to the college

GS English Language Courses for Undergraduates
Students are required to take these courses to improve their practical English proficiency.

Transdisciplinary [YUGO] Guidance

Core [KOA] Courses
Students study across three core areas to determine the direction of future topics they want to explore.

Practical [JISSEN] Courses

In order to foster entrepreneurship with a view to apply the skills in the society, courses are systematically arranged with a focus on exercises.

Exploring [TANKYU] Guidance

Academic Knowledge [GAKUCHI] Courses
Students explore their own future themes in greater depth, regardless of academic field.

Students engage in group work to explore issues through co-creation with other people with diverse backgrounds, such as international students and working adults.

Establishing [KAKURITSU] Guidance

Disciplinary [TANREN] Courses

5 Courses available, 3 Courses required

Deepen one's own learning through co-creation with others

Establishment [KAKURITSU] Courses

Graduation Thesis Research/Graduation Thesis Seminar/Qualifying Examination

Students learn reasoning skills while being well aware of social implementation.

Become a leading human resource for social change with integrated expertise!

[School of Entrepreneurial and Innovation Studies:
Academic achievement attained at graduation]

- Ability to learn and understand the latest multi-dimensional knowledge to lead social transformation
- Ability to understand future issues, gather and analyze diverse information about people, things, and issues.
- Ability to think logically for problem solving and social implementation
- Ability to communicate actively in the international community with expertise in languages and other cultures in order to fulfill one's mission
- Ability to have high motivation for creating businesses and taking an active and proactive approach to challenges, ideas and actions

[Degree Awarded]

Bachelor of Arts and Sciences

A degree awarded only by this college in our university, which shows that students have learned transdisciplinary fields in an integrated manner.

With a view to social change, students can learn the latest knowledge, science and technology in a wide range of depth through an entrepreneurship-training stratified curriculum.

Studies in Liberal Arts and Sciences 36 credits or more

Introductory Courses to Academic Studies | GS General Education Courses | GS Language Courses
Additional Foreign Language Courses or Natural Sciences and Mathematics Courses | Elective Courses

Studies in Specialized Fields 88 credits or more

GS Courses for Undergraduates 6 credits

Academic Skills Presentation and Debate Introduction to Innovation
Introduction and Practicum for Mathematical Data Science Design Thinking

GS English Language Courses for Undergraduates 2 credits

Practical International English Current Issues and Academic English

Specialized Basic Courses

Practical [JISSEN] courses 10 credits

Introduction to Entrepreneurship Entrepreneurship Seminar 1 Entrepreneurship Seminar 2
Design Thinking Seminar Entrepreneur Internship Entrepreneur Competitions/Leadership Training
Entrepreneur Competitions /Leadership in Practice

Core [KOA] courses 18 credits or more

Core Area of Social Cyclicity

Introduction to Finance Contemporary Society Introduction to FinTech and Advanced Business
AI and Future Society Social Change and Labor Productivity Super Smart City and Society 5.0
Ethics Sharing Economy Consumer Life Theory

Core Area of Global Co-Creation

Diversity Promotion Introduction to Marketing International Cooperation Systems
Human Flow and Settlement Cross-Cultural Understanding and Career Development International World and Patents
Introduction to SDGs Globalization Business and Politics/Economy

Core Area of Scientific Emergence

Introduction to Technology Artificial Intelligence Technology and World Innovations
Introduction to Mathematical Statistics Medicine from Social Perspectives Global Problems and Technology Trends
IoT Technology Medicine from Life Science Perspectives Future of Medical Science

Specialized Courses

Academic Knowledge [GAKUCHI] Courses 30 credits or more

Introduction to Mathematical Modeling Advanced Medicine Programming Skills
Practical Approach for SDGs Practical Approach for Data Science Demand Forecasting
Marketing Business Management Business Incubation
Information Network General Psychology Public Policy
Project Management Reform of Medical System and Medical Economics Sensing Technology
Computers and Digital Circuit Urban Transportation Planning ESG Investment
Life Design Intellectual Property Law Life Environmental Studies
Hyper-Aged Society and Science Technology Regional Comprehensive Care and Revitalization Theory of Corporate Strategy
Application Development Material Science International Management
Management Accounting Database System Precision Medicine
Technology of Medicine, Health, and Care Planning Optimization Comparative Systems
Regional Revitalization Future-oriented Healthcare System Machine Learning
Optics Technology Global Environment and Its Dynamics Innovation Management
Regulatory Science AI / IoT Health and Welfare Brain-machine Interface
Computers and Electronic Circuit Environmental Basic Science

Disciplinary [TANREN] Courses 4 credits

Exploratory Project Seminar Study Abroad Programs International Internship Programs
Academic Investigation Exploratory Analysis

Establishment [KAKURITSU] Courses 8 credits

Graduation Thesis Research Graduation Thesis Seminar Qualifying Examination

Elective Frame 10 credits or more

[Among the Studies in Specialized Fields designated separately]

We asked questions to students in the School of Entrepreneurial and Innovation Studies

[Students admitted in April 2021]



NAKADA, Takamizu
[From Ishikawa]

To make my dream come true

① I was browsing Kanazawa University's website in the early winter of my senior year of high school, thinking about which university I should enter. I saw the introduction of the School of Entrepreneurial and Innovation Studies of the College of Transdisciplinary Sciences for Innovation, which was going to be newly established. Unlike other colleges, you can do various things beyond the walls of academic fields. Through a questionnaire, I had heard that Kanazawa University was going to open a new college for a transdisciplinary field, and I thought it

would be interesting. After reading the introduction, I immediately thought, "This is it!" It's been only a short time since I entered the school, but I'm glad I did.

② My dream for the future has not been decided yet. My dream (tentative) is to become a person who can realize what I want to do. I believe that this school helps me realize my dream, because you can study a wide range of fields. When you do find a dream, it stays within the feasible range. I recommend this school for those who haven't found their dream yet.



IMAKADO, Nagumi
[From Tokyo]

Make everyone in the world smile

① Even in my senior year of high school, I did not have a clear future vision, and it was difficult to decide which department to apply for. Also, when I had doubts about having to choose a university major as a high school student, I heard about the School of Entrepreneurial and Innovation Studies. I looked it up, and I learned that it was an transdisciplinary department where students learn regardless of their academic fields: humanities or science. Before then, I had thought that I could learn only one subject at university, which would almost determine my future profession. The key

factor for my choosing this school was its environment where I can learn various things.

② My dream for the future is to make people around the world smile and be happy, which requires an immense amount of effort, clear planning, execution, and partners who share the dream. I believe that it helps me pursue this big dream to be in the School of Entrepreneurial and Innovation Studies. Here, you are encouraged to pursue and realize your dream, even if it seems absurd to others. I want to make this dream come true.



NAGAMORI, Kanto
[From Aichi]

Act globally

① I have many dreams: I want to become a researcher and study intensively; I want to be financially secure; go abroad; try programming and become a businessperson. In my senior year of high school, I was undecided about what I would do after graduation. That was when I came across with this brochure of this department or school. At first, I didn't think "transdisciplinary" and "future of innovation" were names of university departments. I picked it up out of curiosity, it said, the College of Transdisciplinary Sciences for Innovation would offer various options to students:

you could take both liberal arts and science classes, have a curriculum including launching a business or studying abroad. I thought it was the department for someone like just like me who wasn't sure about what I wanted to do after graduation.

② In high school, even though I was in science course, I took both science and humanities because I wanted to work globally in the future. I am really glad that I'm here because I can learn things that aren't available anywhere else. For the challenging future of AI evolution and globalization,



YOSHIHARA, Suzuha
[From Shiga]

Every day is stimulating

① The key to choosing the School of Entrepreneurial and Innovation Studies is to become one of its first students. The foundation had been built, however, I found it fascinating to be able to build from the ground by ourselves. Another reason for choosing the department was its small size in number of students. I thought that curious and interesting people would gather here, and they would inspire me through working closely with them. Also, you can learn various subjects regardless of fields such as liberal arts, science, or medicine. I was a liberal arts student, but I thought

August 2022 – June 2023
To study abroad (in Sweden) at Karlstad University

that having a different way of thinking would make me able to see things in various aspects, and hence enrich my life.

② As expected, having entered the school, I get inspired everyday by many proactive classmates. Before I met them, I was interested only in fields such as global co-creation, now I want to interact with them and learn more about various fields. I came to want to start a business, which is something unimaginable to me in the past. I'd like to continue to grow with them and have this energetic and fulfilling university life.

Questions:

- ① What made you choose the School of Entrepreneurial and Innovation Studies? ② What is your future dream?



OYAGI, Kazuki
[From Kyoto]

Challenge the future world

① The reason I chose the School of Entrepreneurial and Innovation Studies was because of its educational policy emphasizing practicality. Conventional systems such as lifetime employment are no longer sustainable. What such a society needs is the power to think and act on your own. The curriculum of the school is made in the way that you set up your own theme, learn whatever is necessary, regardless of its disciplinary fields, and try them out. In that sense, I strongly believe that this curriculum is what is called in the present age. The future is in our hands. You have all the

tools and environments here. I strongly recommend the School for the Future of Innovation of the College of Transdisciplinary Sciences for Innovation, for those who want to create a new era.

② I traveled abroad for the first time when I was a high school student and had a culture shock. I wanted to know more about the unknown world, and I began to think that leaving the unknown alone would be a great loss in my life. During my university years, I would like to interact with various people in various places, and in the future, challenge myself to the unknown where humankind has yet to tread.



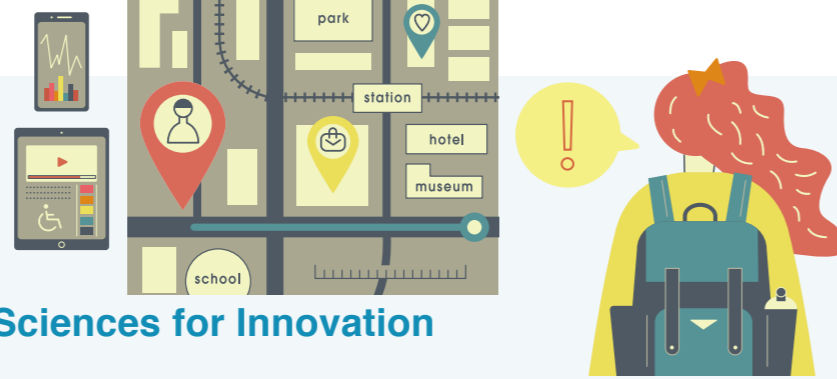
FUJISAWA, Shiho
[From Ishikawa]

Specializing in both business and international exchange

① As society is undergoing major changes, such as the rise of AI and the spread of COVID-19, I chose the School of Entrepreneurial and Innovation Studies, which aims to foster human resources who will lead social change, as I believe it could be risky to pursue a specialized course in a conventional academic department. At this school, you can let your interest guide your course of learning, which is another good point. I hope that the number of people with the same aspirations as ours will increase and expand my network over the years.

② At university, I want to focus on and be specialized in both business and international exchange, as I would like to acquire skills and knowledge as an entrepreneur and study abroad. While in school, I would like to learn about starting up and supporting businesses in the real world, and after graduating from university, I would like to give advice to companies and start my own business. I intend to experience various things as much as possible while I am in school. I am also studying for the qualification of a Registered Smaller Enterprise Consultant to prepare for my future.





Established April, 2022

College of Transdisciplinary Sciences for Innovation

School of Tourism Sciences and Design

Aiming to develop human resources to lead the tourism industry and creating new value in tourism, the "School of Tourism Sciences and Design" has been established in the College of Transdisciplinary Sciences for Innovation. The school aims to create new value in tourism through humanities approaches exploring human psychology and behavior as well as local history and cultural values, and social science approaches focusing on business development centered around tourism, and science and technology approaches that focus on Society 5.0. With an emphasis on the wide-area and sustainable development of tourism, it also aims to create new value in tourism and transform the industrial structure, through establishing a regional revitalization platform where all sectors work together, and developing human resources who design tourism value, expanding the population involved.

[General Admission]

First schedule (Liberal Arts-oriented Selection and Science-oriented Selection), First schedule (Liberal Arts Education Division and Science Education Division)

[Special Admission]

KUGS Admission (Comprehensive Selection II, Comprehensive Selection based on English language skills II), Special Talent Admission (CHOZEN Selection) (Admission by A-lympiad Award I, Admission by CHOZEN Literature Award), S.A. by Recommendation for students Living Overseas, S.A. for Adult and Non-traditional students, S.A. for Returnees, S.A. for International Baccalaureate, and S.A. for Self-funded International Students

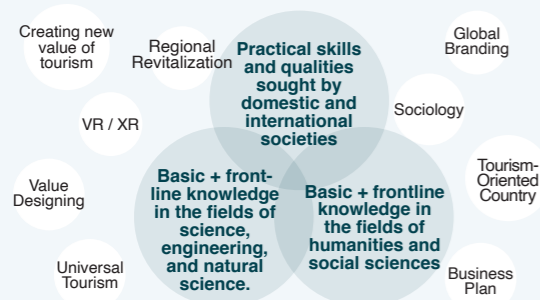
Desirable image of human resource to be nurtured at the "School of Tourism Sciences and Design"

The School of Tourism Sciences and Design aims to foster human resources who will address the resolution of various issues of tourism industry based on an adequate understanding of the radical social change and empathy for the value on a global scale by utilizing various knowledge of the humanities, social science and natural science fields, and who will design new value of tourism to look ahead to networked international tourism nation responded to Society 5.0 and new normal lifestyle.

[Desired Applicants]

The School of Tourism Sciences and Design seeks applicants with the following ambitions.

- People who wish to study a variety of fields and then integrate that knowledge to take the initiative in locating and solving issues.
- People who are intellectually enthusiastic about a variety of systems and customs, and who wish to contribute to building a better society.
- People who wish to joint and integrate the latest knowledge and take on the challenge of the creation of new value the contribute to tourism.



Meet increasingly complex and diverse challenges of the future

3 Features

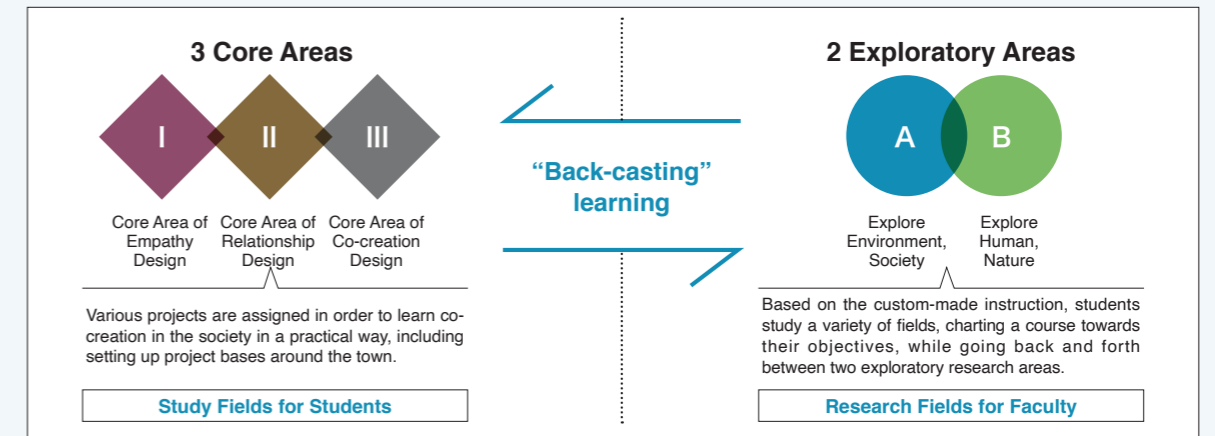
1 Learn Flexibly! Acquire specialized knowledge, ranging from basic to practical, in the transdisciplinary field

- ▶ Students learn the latest knowledge and technology according to their interest, deeply and widely in the well-balanced transdisciplinary academic fields.
- ▶ Students learn the basics for tourism and business technologies in 3 approaches: humanities; social sciences; and natural sciences.
- ▶ Students deep dive into their own "theme" by learning back and forth between 3 core areas and 2 exploratory areas.



[Core areas x Exploratory areas]

The curriculum systematically allows students to learn cutting-edge contents while also acquiring the fundamentals.



2 Go out into society! Learn co-creation and practical skills with society through participating in various projects

- ▶ Through Practical [JISSEN] & Disciplinary [TANREN] Courses, students learn co-creation within society.
- ▶ Practical trainings take place at the project bases in the city, in cooperation with local governments and industries.
- ▶ Students choose from practical approach in tourism business, study abroad programs in tourism Sciences and international internship programs to implement short- and long-term projects.
- ▶ Students create new tourism value in collaboration with society based on their expertise and free ideas.

[Participating in a variety of innovative projects]



3 Regional Revitalization Utilize valuable designs in tourism to influence the presence in local communities.

- ▶ Students will design regional revitalization in the future, expecting the synergy effect of region, university and industry.
- ▶ Utilizing local resources, issues, and knowledge, students take a multifaceted view of thinking, ideas, and practices, and learn about economic revitalization, industrial creation and promotion, and development of new ideas based on study of the past.
- ▶ Students will learn practical solutions on a platform that originated in Kanazawa City, Ishikawa Prefecture.



Gold Leaf Craft (Kanazawa City produces 99% of gold leaf in Japan) Photo provided by Kanazawa City

Features of School of Tourism Sciences and Design

[Basic Policy on Economic and Management Reform 2020 (July, 2020)]

The potential for inbound tourism seems great, even in the post-COVID-19 era. The government will work to bring the public and private sectors together to achieve a nation that is highly developed in terms of tourism, working towards achieving a goal of 60 million international visitors in 2030.

[Intellectual Property Strategy Vision (June, 2018)]

The shape of a desirable society where diverse values beyond economic values are embraced and a wide range of new values are created and disseminated to receive empathy and respect from countries around the world by exercising the multifaceted abilities of diverse personalities and making good use of the "characteristics of Japan."

Based on the recommendations of the government, we will systematically conduct transdisciplinary and entrepreneurship education to develop new tourism designs.

[Specialized Education Map]**Thorough study guidance by increasing the number of advisors**

A customized learning plan is created by monitoring the learning progress and the future vision of each student.

Learning Plan I

Study guidance concerning ways to take Fundamental [KIBAN] Courses

Learning Plan II

Study guidance from "Academic Knowledge [GAKUCHI] Courses" to "Disciplinary [TANREN] Courses"

Fundamental [KIBAN] Guidance

Transdisciplinary [YUGO] Guidance

Exploring [TANKYU] Guidance

Establishing [KAKURITSU] Guidance

Curriculum emphasizing problem-identifying-and-solving models

Students take a systematic course of study, from searching for problems and applying solution to society.

Practical education in a diverse environment

Using a variety of entrance examination systems, we create a diverse environment that includes international students and adults

GS Courses for Undergraduates

Courses required to learn specialized skills common to the college

GS English Language Courses for Undergraduates

Students are required to take these courses to improve their practical English proficiency

Fundamental [KIBAN] Courses Learn the basics of tourism in 3 approaches

A wide range of businesses and technology fundamentals, including tourism, can be learned through transdisciplinary fields and back-casting learning.

Practical [JISSEN] Courses

In order to foster entrepreneurship with a view to social implementation, courses are systematically arranged with a focus on seminars and exercises

Academic Knowledge [GAKUCHI] Courses Learning three core areas back and forth

Placing one core area as the main one, students learn the other core areas back and forth.

Students engage in group work to explore issues through co-creation with other people with diverse backgrounds, such as international students and working adults.

Disciplinary [TANREN] Courses**Practical Approach in Tourism Business, Study Abroad Programs in Tourism Sciences, International Internship Programs**

Refining practical skills through socially implemented seminars and overseas learning

Establishment [KAKURITSU] Courses**Graduation Thesis Research / Graduation Thesis Seminar/ Qualifying Examinations**

Creating innovation by addressing the issues students set as the culmination of learning

Become a tourism value creator with integrated expertise!

[School of Tourism Sciences and Design: Academic achievement attained at graduation]

- Ability to learn and understand the latest multifaceted insights to design new value in tourism
- Ability to understand future issues, gather and analyze diverse information about people, things and matters.
- Ability to think logically for solving challenges and social implementation
- Ability to communicate actively in the international community with expertise in languages and other cultures in order to fulfill one's mission
- Ability to have high motivation for creating value and positively and actively taking on challenges, ideas, and actions

[Degree Awarded]**Bachelor of Arts and Sciences**

A degree awarded only by this college in our university, which shows that students have learned transdisciplinary fields in an integrated manner.

With sociology as a main background students learn the latest knowledge, science and technology in a wide range and depth through a layered curriculum based on the model of problem discovery, solution, and application.

Studies in Liberal Arts and Sciences 36 credits or more

Introductory Courses to Academic Studies | **GS General Education Courses** | **GS Language Courses**
Additional Foreign Language Courses or Natural Sciences and Mathematics Courses | **Elective Courses**

Studies in Specialized Fields 88 credits or more**GS Courses for Undergraduates 6 credits**

Academic Skills Introduction and Practicum for Mathematical Data Science Presentation and Debate Design Thinking Introduction to Innovation

GS English Language Courses for Undergraduates 2 credits

Practical International English Current Issues and Academic English

Specialized Basic Courses**Practical [JISSEN] courses 13 credits**

Introduction to Entrepreneurship Seminar of Digital Transformation and Project Based Learning in Tourism 1 Workshop Design Seminar Business Plan Making Seminar Application Development Tourism Project Seminar 2 Entrepreneurship Seminar 1 Seminar of Digital Transformation and Project Based Learning in Tourism 2 Social Survey in Tourism Form and Color Design Programming Skills Tourism Project Seminar 1 Tourism Project Seminar 4

Fundamental [KIBAN] Courses 19 credits or more

Introduction to Hospitality Introduction to Tourism Design Introduction to FinTech and Advanced Business Tourism Ethics Cross-Cultural Understanding and Career Development Tourism Industry in Hokuriku Region Interaction Network Engineering Agriculture, Forestry and Fisheries/Manufacturing Industry in Hokuriku Region Introduction to Mathematical Behavior Model Introduction to Finance Technology and World Innovations Introduction to Marketing Public Health in Tourism Introduction to SDGs Japanese Crafts and Designs Diversity Promotion Sharing Economy Introduction to Technology Artificial Intelligence Super Smart City and Society 5.0 Tourism Law and System Introduction to Mathematical Statistics Financial Engineering Cultures in Urban and Rural Areas in Hokuriku Region Regional Business in Tourism

Specialized Courses**Academic Knowledge [GAKUCHI] Courses 26 credits or more****Core Area of Empathy Design**

Entertainment Management Culture and Consumption Society Comparative Regional Development Intangible Cultural Heritage International Project Management Resource Use and Co-living with Environment Branding Practicum

Practical Approach for SDGs Sustainable Tourism Global Branding Culture and Regional Economies Nature-based Tourism Ergonomics

Cultural Tourism Traditional Culture Transformation Heritage Interpretation Life Design Tourism Resource Development Tourism Resource Management

Core Area of Relationship Design

IoT Technology Web Content and Review Analysis Information Policy Spatiotemporal Data Analysis Transportation Engineering International Conflict Management Demand Forecasting

Practical Approach for Data Science Applied Analysis of Tourism Data Global Accessibility Intellectual Property Law VR and XR for Tourism Planning Optimization

Behavioral Economics Advanced Digital Transformation of Tourism Industry Urban Transportation Planning Statistical Decision Making International Media Analysis Database System

Core Area of Co-creation Design

Tourism and Regional Management Tourism Development and Planning Industrial Design Community Design Urban Planning Planning System and Process Hospitality Management

Regional Tourism Policy Regional Sociology Event Management Theory Theory of Renovation Social Business Theory Sociology of Tourism

Environment and Tourism Landscape and Infrastructure Design Regional Management Social System Engineering Design of Public Space Study of Regional Living Environment

Disciplinary [TANREN] Courses 4 credits

Practical Approach in Tourism Business A Study Abroad Programs in Tourism Sciences A International Internship Programs A Practical Approach in Tourism Business B Study Abroad Programs in Tourism Sciences B International Internship Programs B Practical Approach in Tourism Business C Study Abroad Programs in Tourism Sciences C International Internship Programs C

Establishment [KAKURITSU] Courses 8 credits

Graduation Thesis Research Graduation Thesis Seminar Qualifying Examination

Elective Frame 10 credits or more

[Among the studies in specialized Fields]



[Exploratory areas / Environment, Society]

Exploring Optimal Development of Environmental and Social Structures

Let's design a new society from a tourism perspective.



Economics

SAMUTA, Hikaru

KEYWORD
Regional Economics / Endogenous Development / Sustainability / the value of locality / Local and Regional Diversity

See "tourism" from a scientific perspective with sociological imagination and a researcher mindset.



Sociology

MANABE, Tomoko

KEYWORD
Community / Social Capital / Community Development / Partnership between citizens and government / Workshop Design

"Re-startup" from Hokuriku which is the best destination for collaboration with Japanese "Only-one-Tech. SMEs" in the world!

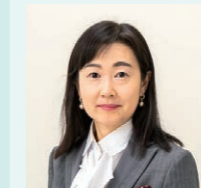


Global Entrepreneur / Re-startup

MATSUSHIMA, Daisuke

KEYWORD
How to start a disruptive innovation / Learning by identifying a problem / Emerging Asia as a method / Zeami's presentation method / Beyond COVID-19

Seven billion people in the world can be inbound visitors.



Sociology

HIBINO, Yuri

KEYWORD
Ethical, Legal and Social Issues (ELSI) in Science and Technology / Gender / Family, Reproduction and Children

Start creating innovation with colleagues from various companies and laboratories!



Innovation / Marketing

KANAMA, Daisuke

KEYWORD
Exploring processes of new product development / Planning and evaluating business models / Examining corporate competitiveness / Collaboration between companies and universities / Sources of creativity and taking on challenges

Achieving your mission of contributing to society, nature, culture, environment, and the Earth through tourism!



Heritage Interpretation

YAMADA, Naoko

KEYWORD
Conservation Education and Communication / Heritage Interpretation / Sustainable Tourism / Tourist Behavior / Tour Guiding

Beyond the Wall lies a new future!

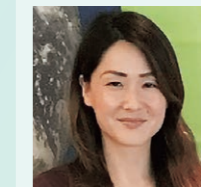


Home economics & Life science

OJIMA, Kyoko

KEYWORD
Consumer Life / Consumer Education / Family Resource Management / Lifestyle Culture

Be the driving force to create the society you want



Sustainable Development

KOUCHI, Ikuho

KEYWORD
SDGs / Environmental Issues / Social Innovation / Active Learning / Environmental Education

Let's collaborate with diverse people, including residents and tourists, to solve social and spatial problems with the power of design!



Community Design

MARUYA, Kota

KEYWORD
Urban Design / Tourism and Community Development / Landscape / Cultural Landscape / Traditional Crafts

Soar innovatively from Kanazawa to the world!




Applied Linguistics / Higher Education

DUGGAN, Sagano

KEYWORD
Global Communication / Academic English / Practical English / Study Abroad

Why don't you study based on your interests/needs, designing outside the box!




Design for Future Society

NAKAYAMA, Shoichiro

KEYWORD
Connections & Networks / Urban and regional design / Smart city / Next-generation mobility / Human mobility and lifestyle

What is important is to strike a chord with people




Philosophy & Ethics

ODAGIRI, Takushi

KEYWORD
Ethics / Technology / Environment / Life / Film

Focusing on languaging and culture, let's design a society where both travelers and residents are comfortable.



Languaging and Communication

MATSUDA, Makiko

KEYWORD
Tourism and Languaging / Culturally Linguistically Diverse / Migration / Study Abroad / Media Literacy

Let's learn about the ways to take full advantage of your individuality and potential.



Environmental Science

NISHIWAKI-AKINE, Yuri

KEYWORD
Environment / Biomass / Biodegradability / Cellulose / Transparent Wood

Students in our bachelor's degree programs belong to schools and colleges, while faculty members belong to Faculties and Institutes, and other research organizations. All full-time teachers of the College of Transdisciplinary Sciences for Innovation belong to the Faculty of Transdisciplinary Sciences for Innovation in the Institute of Transdisciplinary Sciences for Innovation and students can have advice from all of them. They are just some of our faculty. We will continue to increase teachers, expand and enhance the quality of education.



[Exploratory Areas / Human, Nature]

Exploring the Fundamental Evolution of Sustainable Humans and Nature

There is no border in science and technology. Let's join together to create new frontiers!



Biomedical engineering

MIYATI, Tosiaki

KEYWORD

Health care / Noninvasive functional imaging / MRI, CT, ultrasound, near infrared, etc.

Innovation begins with the conversion of technology into unexpected or unexplored fields!



Applied Information Science

SATOU, Kenji

KEYWORD

Machine Learning / DNA Sequences / Image Recognition / Meanings of Strings / Animal Behavior

Let's thrive in the new, post-COVID society!



Biological Information Internal Medicine

OHTAKE, Shigeki

KEYWORD

Leukemia / Clinical Research / Chemotherapy / Laboratory Tests / Internet

Let's think "tourism design" together in order to realize a rich community with many choices for the next generation!



Urban Planning

KAWASUMI, Atsushi

KEYWORD

Tourism and Regional Development / Community Development / Local Resources / Sustainability / Small-Scale Community Based Organization

Start-ups based on solid science and technology lead to future prosperity in Japan and the world



Cancer diagnosis and Therapy

TAKAMATSU, Hiroyuki

KEYWORD

Cancer and Genes / Immunotherapy / Biomedical Engineering / Nanobioprocess / Bioreactors

Think Big, Start Small, Learn Fast!



Medical Innovations

YONEDA, Takashi

KEYWORD

Preventive medicine and Health promotion / Digital Medicine (AI/IoT/Big data) / Health policy / Telehealth/telemedicine

Design a new tourism for Society 5.0 with the power of mathematics



Applied Mathematics

WADA, Keigo

KEYWORD

Real Data Analysis / Numerical Calculation / Statistics / Mathematical Model / Differential Equations

From Kanazawa to the world! Let's think together about the well-being of human beings in the world.



Social Medicine

ISHIZAKI, Azumi

KEYWORD

Global Health / Viral Infections / Epidemiology / Public Health /SDGs

We help prepare you for today's VUCA/BANI world. Learn with us and develop your bird's-eye view, worm's-eye view, as well as critical thinking skills to see the big picture of the world and think outside the box to face today's challenges!



Career Theories, Career Education / Cultural Anthropology

TAKANUMA, Rie

KEYWORD

Cross-cultural understanding / Examining the direction of one's life / Collaboration and Conversation with others / Cross-border education / Learning from experience

This college is for you if your interests go beyond the categories of liberal arts or science.



Human Information Engineering

NAMBO, Hidetaka

KEYWORD

Artificial intelligence / Machine learning / IoT / Sensor information processing / Medical information processing

Let's think about "travel" in Kanazawa through learning various viewpoints and analysis methods.



Transportation Planning

YAMAGUCHI, Hiromichi

KEYWORD

Long-distance travel behavior / Behavioral data analysis / Intercity transportation network design / Data science

Let's go beyond the boundaries and work together to make the world a better place.



Electronics

AKITA, Junichi

KEYWORD

Semiconductor / Make / User Interface / IoT

A lot of fun comes out when you merge various fields! Please come to the School of Entrepreneurial and Innovation Studies!



Civil Engineering

FUJIU, Makoto

KEYWORD

Transportation, disaster prevention, community planning / Community/Cruise Tourism / Medical big data / Infrastructure Maintenance / Various big data

Let's create tourism that everyone can access and enjoy with global perspectives.



Public Health

TSUTSUMI, Atsuro

KEYWORD

Accessible Tourism / Wellbeing / Social Design / Diversity and Inclusion / global

Students in our bachelor's degree programs belong to schools and colleges, while faculty members belong to Faculties and Institutes, and other research organizations. All full-time teachers of the College of Transdisciplinary Sciences for Innovation belong to the Faculty of Transdisciplinary Sciences for Innovation in the Institute of Transdisciplinary Sciences for Innovation and students can have advice from all of them. They are just some of our faculty. We will continue to increase teachers, expand and enhance the quality of education.

In the College of Transdisciplinary Sciences for Innovation, teachers provide thorough instruction for students to select the most suitable courses for individuals from a variety of transdisciplinary courses. As a place for collaboration between students and faculty, we hold the next guidance every year, and draw up a custom-made "learning plan" focusing on students' interest while connecting the direction of future issues with the beginning of problem solving.

Orientations	upon enrollment	Course guidance and school orientation upon enrollment.
Fundamental [KIBAN] Guidance	for Freshmen	Instructors assigned to each class provide guidance on all aspects of academic affairs and student life, including study methods and extra-curricular activities.
Transdisciplinary [YUGO] Guidance	for Sophomores	A custom-made "Learning Plan I" will be prepared based on each student's study status and academic progress in common education subjects. Based on the systematized learning, students set up tasks and use the advice of teachers to clarify their future vision.
Exploratory [TANKYU] Guidance	for Juniors	A "Learning Plan II" will be prepared based on the study status and progress in the core area, and the direction toward setting future tasks. If necessary, students take courses in other academic schools with back-casting learning* to acquire basic knowledge. Learning in various fields under the guidance of teachers also helps to set future tasks.
Establishing [KAKURITSU] Guidance	for Seniors	In addition to reviewing the progress of the "Learning Plan I / II" with the instructor, the instructor will guide the students to do back-casting learning* and take other courses according to their individual learning. In addition, regarding graduation research, exercises, and examinations, students are advised to receive guidance from experts and entrepreneurs in fields different from those of the instructors if necessary.

* Back-casting learning: When you envision your ideal self to be active in the future society, there may be areas where you feel you are not learning enough. In such a case, even after you have moved on to the academic knowledge phase, you can go back and study the specialized basic subjects.

We also have a number of ways to seek advice, support, guidance, including from teachers of other colleges,
 • Career consultants, industrial counselors, people with experience in the business, extramural people are in the Career Support Room in Student Support Division;
 • Medical doctors, approved counselors, health nurses, and nurses are at the Health Service Center; and
 • Members of Students-with-handicaps Support Room, staff members of the Transdisciplinary Sciences Administration Department are in the "counseling room" (mainly in the first year), all of them are waiting for you.

Promoting Employment in Japan for Students from Overseas

For international students looking to find a job in Japan, we offer special programs for them to study the curriculum of the College of Transdisciplinary Sciences for Innovation while emphasizing the use of business and the acquisition of Japanese language skills from the time they enter the school. We also plan to provide generous support for students' lives, such as tuition reduction and stipend scholarships.

Employment / Further Learning Status (of graduates of Year 2021 4-year undergrad program)

Established in 2021, the College of Transdisciplinary Sciences for Innovation is a completely new academic field. Having no progenitor organization, the results of the 15 academic schools in the 3 existing academic colleges of the University are reported here. This figure does not include 146 graduates of 6-year bachelor's degree programs (111 in the School of Medicine and 35 in the School of Pharmacy).

Categories	College of Human and Social Sciences	College of Science and Engineering	College of Medical, Pharmaceutical, and Health Sciences	Total
Graduates (4-year program)	741	642	239	1,622
Students entering graduate schools (including Bekka, Undergraduate Training Course for School Nurses)	4.7% · 35	67.1% · 431	32.6% · 78	33.5% · 544
Students who seek employment Employment rate 98.5% (obtained and seeking)	Industry world	146	63	569
	Public workers / Teachers / Medical workers	270	36	394
	Self-employed	11	1	14
	Total number of job finders	86.5% · 641	28.5% · 183	64.0% · 153
Other (including returnees, researchers and those who prepares for tests)	65	28	8	6.2% · 101

◆ A graduate school is planned to be established by the time the first students of College of Transdisciplinary Sciences for Innovation graduate.

Kanazawa Guide

Kanazawa, a cultural city with one of the best academic and tourism resources in Japan, has a growing population of young people, making it easy to live in, blessed with delicious foods. How about changing yourself and your future in the City of Kanazawa and at Kanazawa University that makes effort to develop cutting-edge knowledge and achievements? This is where you can encounter new knowledge, the opportunity to take on challenges, and the core of regional revitalization.



[Photo provided by] Kanazawa City

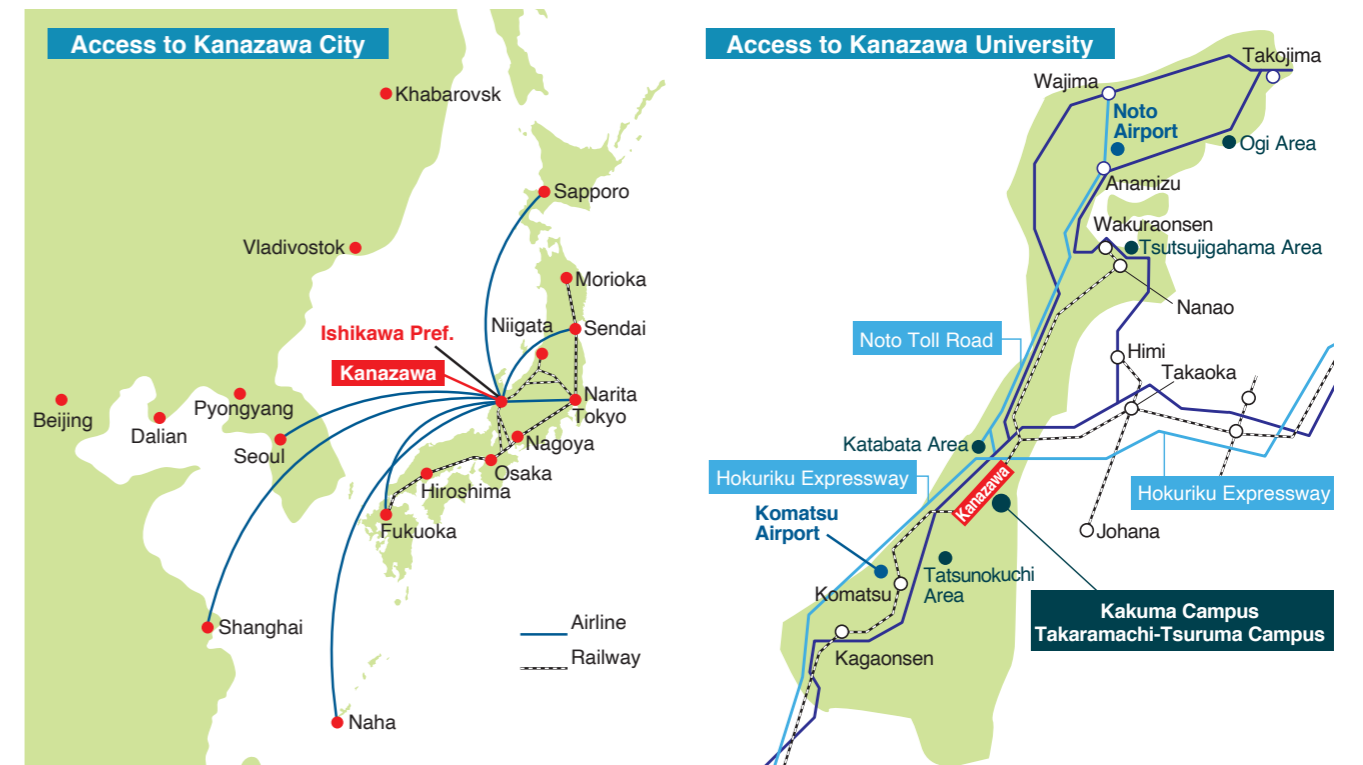
Kanazawa University Campus Introduction

The campus environment is international and has an excellent learning environment.
Create your own future in an environment where you can meet new knowledge and take on challenges.



ACCESS

Kanazawa City is located on the Sea of Japan in the middle area of Japan.



Access to Kanazawa City

By Airplane: Approx. 2 hours from Incheon (Seoul) to Komatsu Airport
Approx. 2 hours from Pudong (Shanghai) to Komatsu Airport

Access to Kanazawa University

By Airplane: Approx. one hour from Haneda (Tokyo) to Komatsu Airport
JR Train: Approx. 2 hours & 30 minutes from Tokyo Station to Kanazawa Station(via Hokuriku-shinkansen)
Approx. 2 hours & 30 minutes from Osaka Station to Kanazawa Station
Approx. 3 hours from Nagoya Station to Kanazawa Station

From Kanazawa Station to Campuses (by Hokuriku Railroad Bus (北陸鉄道バス))

Kakuma Campus (College of Philosophy in Interdisciplinary Sciences)

To "Kanazawa Daigaku Shizenken Mae(in front of Natural Science & Technology Hall, 金沢大学自然研前) ,"
"Kanazawa Daigaku Chuo(Kanazawa University Central, 金沢大学中央) " or
"Kanazawa Daigaku(Kakuma) (Kanazawa University(Kakuma), 金沢大学(角間))" bus stops (Approx. 34-37min)
Catch a bus #93, 94, or 97(Route name is Kanazawa Daigaku(Kakuma) (金沢大学(角間))) from Bus Terminal#7,
Kanazawa Station Kenrokuen Gate (East Gate).

Access to Kanazawa University

<https://www.kanazawa-u.ac.jp/e/directions>

